

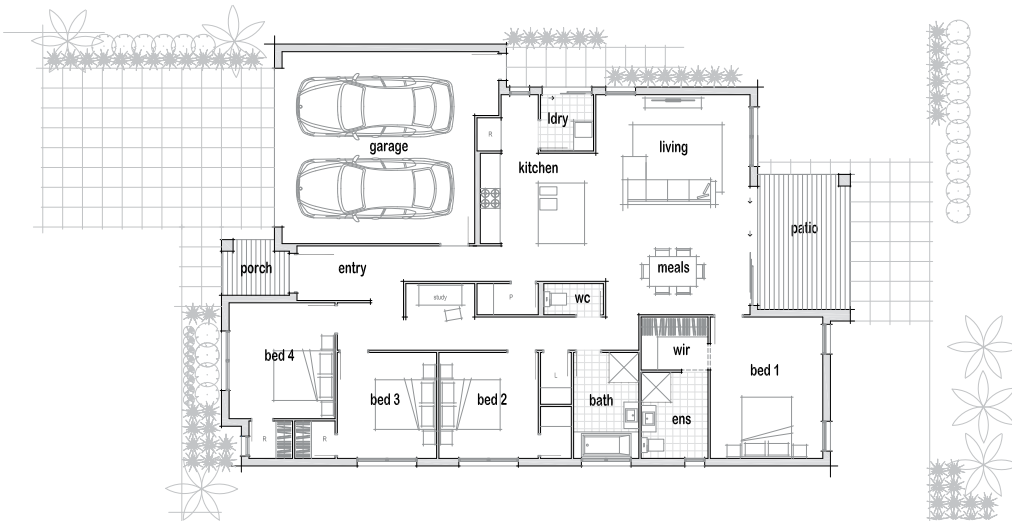
# Welcome home



4 2 2

## ARTESIA 22

14M WIDE FRONTAGE



### DESCRIPTION

This versatile design offers seamless indoor/outdoor integration between the home's open plan heart and its private outdoor living area. Chat freely to family members or guests in the dining or family area as you hone your cooking skills in the Artesia's beautifully appointed, full view kitchen.

### FLOOR AREAS

House Area	117.21m <sup>2</sup>
Garage Area	20.40m <sup>2</sup>
Porch	2.95m <sup>2</sup>
Patio	9.22m <sup>2</sup>
<b>Total Area</b>	<b>149.78m<sup>2</sup></b>

*The Complete PACKAGE*

When you receive the keys to your new home, you'll have a complete home that's ready to move into. That means you can just move and relax without spending your weekends turfing or fencing. No hidden extras or surprises, just a fixed price, turn key package.

CALL US ON (07) 5491 7084 OR VISIT  
[WWW.NUTRENDAHOMES.COM.AU](http://WWW.NUTRENDAHOMES.COM.AU)

# NuTrend

QUALITY HOMES

QBCC LICENCE NO: 1182308