

Welcome home



4



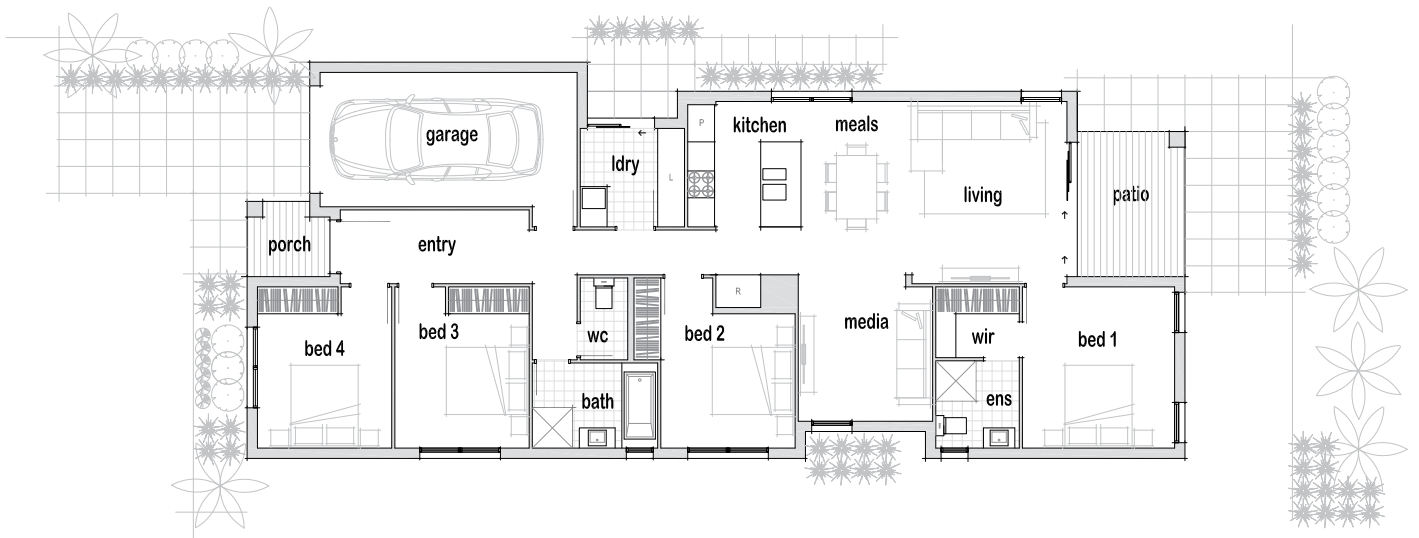
1



2

FONTANA 18

10M WIDE FRONTAGE



DESCRIPTION

Showcasing 4 generous bedrooms (including Master with ensuite and WIR) alongside a separate media room, the Burbank 21 is sure to be the home you will love to live in! The centrepiece kitchen that spills out onto your open plan living areas, and invites your alfresco into the home, your new home will be entertaining at its very finest!

FLOOR AREAS

House Area	136.49m ²
Garage Area	20.12m ²
Porch	2.95m ²
Patio	7.79m ²
Total Area	167.35m²

The Complete PACKAGE

When you receive the keys to your new home, you'll have a complete home that's ready to move into. That means you can just move and relax without spending your weekends turfing or fencing. No hidden extras or surprises, just a fixed price, turn key package.

CALL US ON (07) 5491 7084 OR VISIT
WWW.NUTRENDDHOMES.COM.AU

NuTrend

QUALITY HOMES

QBCC LICENCE NO: 1182308